

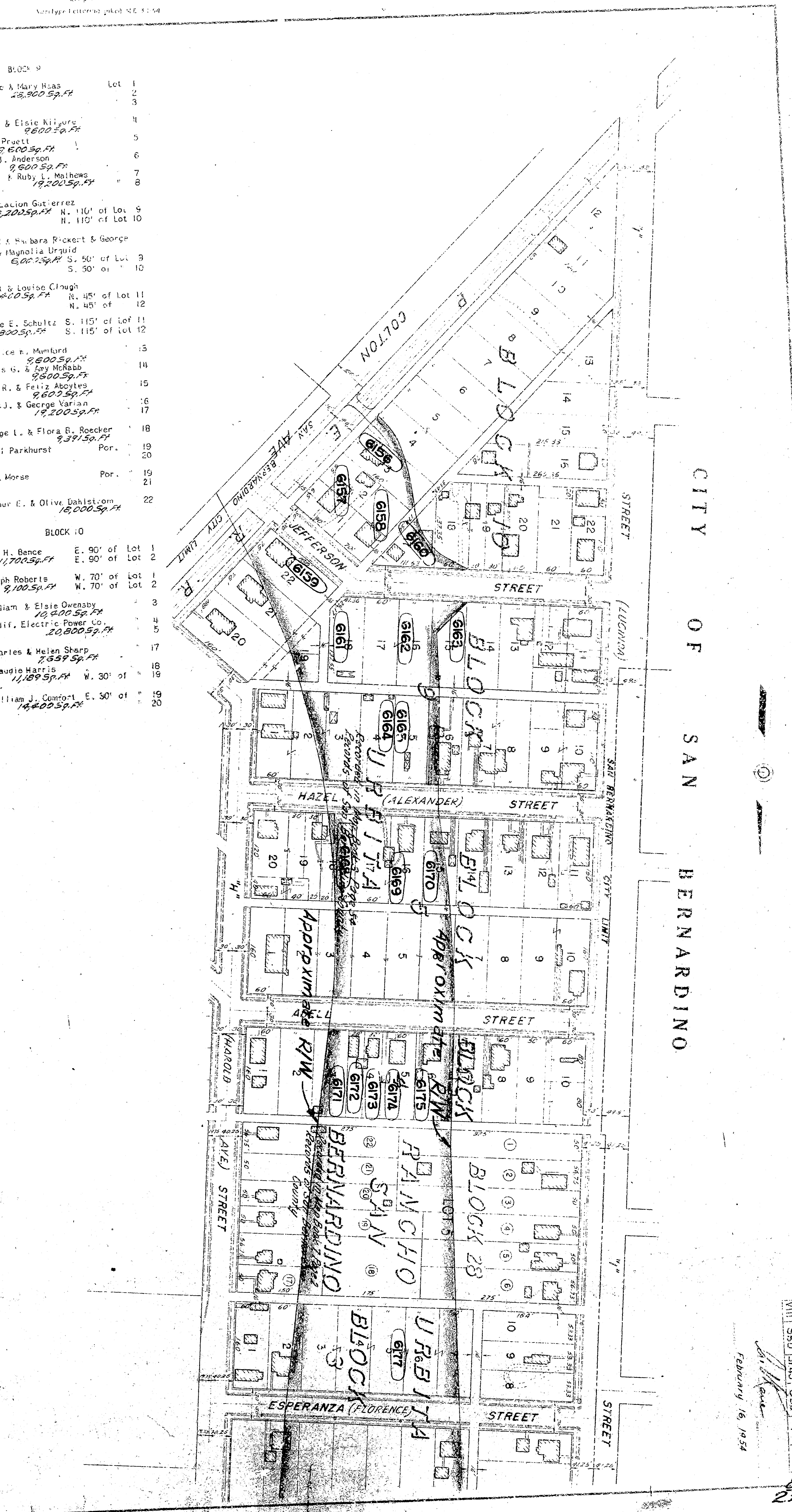
City of San Bernardino
 City Engineer's Office
 City Engineer's Office

UPPER	LOWER
BLOCK 3	
Verma G. & James A. Wright 9,600 Sq. Ft.	Alfonse & Mary Rias 12,800 Sq. Ft.
W.R. & Dorothy M. Wright 9,600 Sq. Ft.	
6177 John C. Preston 98,000 Sq. Ft.	6164 Noye G. & Elsie Kilgus 9,600 Sq. Ft.
	6165 Lillian Pruett 9,600 Sq. Ft.
	Velma J. Anderson 9,600 Sq. Ft.
	John & Ruby L. Matthews 12,800 Sq. Ft.
BLOCK 4	
Elmer G. & Clara Branson 9,600 Sq. Ft.	Purificacion Gutierrez 13,200 Sq. Ft. N. 110' of Lot 9 N. 110' of Lot 10
6171 Clara Branson 9,600 Sq. Ft.	Arnold & Barbara Rockett & George D. & Magnolia Urguid 6,000 Sq. Ft. S. 50' of Lot 9 S. 50' of Lot 10
6172 Att. E. Area 4,400 Sq. Ft. E. 28' of	
6173 George H. & Helen C. Conrad 3,200 Sq. Ft. W. 32' of	Robert & Louise Clough 5,400 Sq. Ft. N. 45' of Lot 11 N. 45' of Lot 12
6174 Urcilla Fahn 9,600 Sq. Ft.	George E. Schultz 12,800 Sq. Ft. S. 115' of lot 11 S. 115' of lot 12
6175 James E. & Vera L. Crogetre 9,600 Sq. Ft.	Boatice R. Mumford 9,600 Sq. Ft.
Harvey & Georgia E. Gillette 9,600 Sq. Ft.	Dennis W. & Fay Harbub 9,600 Sq. Ft.
Fred W. & Irene Hughes 9,600 Sq. Ft.	6163 Jack R. & Feliz Aboyles 9,600 Sq. Ft.
Florence G. Fraser 9,600 Sq. Ft.	6162 Emma J. & George Varian 19,200 Sq. Ft.
Frank A. Culver & E.W. Leonard 5,600 Sq. Ft. N. 1/2 of	6161 George L. & Flora B. Becker 3,200 Sq. Ft. Por.
Millie R. Shea 5,600 Sq. Ft. S. 1/2 of	Pearl Parkhurst Por.
BLOCK 5	
San Bernardino School District 67,200 Sq. Ft.	Anna Morae Por.
	6159 Arthur E. & Olive Dahlstrom 16,000 Sq. Ft.
BLOCK 10	
Frank A. & Helen Calhoun 9,600 Sq. Ft.	6157 Wm. H. Bence 11,700 Sq. Ft. E. 90' of Lot 1 E. 90' of Lot 2
Mamie Layton 12,800 Sq. Ft.	6158 Ralph Roberts 9,100 Sq. Ft. W. 70' of Lot 1 W. 70' of Lot 2
Peter & Despina Milon 9,600 Sq. Ft.	6156 William & Elsie Owensby 10,400 Sq. Ft. Calif. Electric Power Co. 20,800 Sq. Ft.
Murie M. & Margaret Gilmore 9,600 Sq. Ft.	
A.M. & Cyrene Marshall 9,600 Sq. Ft.	6160 Charles & Helen Sharp 2,800 Sq. Ft. W. 30' of
John A. & Mabel Marshall 9,600 Sq. Ft.	Claudia Harris 11,800 Sq. Ft. E. 50' of
6170 Cyrene Marshall 9,600 Sq. Ft.	William J. Comfort 14,400 Sq. Ft.
6169 C.E. & Sophie Sears 19,200 Sq. Ft.	
6168 August F. Galt 5,600 Sq. Ft. W. 40' of	
Eula May Guttridge 9,600 Sq. Ft. E. 20' of	
Ernest D. Emma Lemelin 10,800 Sq. Ft. Por. of	
Anna L. & Sidney Gray 9,600 Sq. Ft. N. 40' of E. 40' of	

RANCHO SAN BERNARDINO
 BLOCK 28 LOT 5
 (Assessors Map No. 84-14)
 PAGE 00 LOT No.)

Lot	Owner	Area
1	Maggie Candenne & Al Sentenne	16,250 Sq. Ft.
2	Annie Ballinger et al	18,444 Sq. Ft.
3	William & May Dowe	16,250 Sq. Ft.
4	Harry & Ada Christenson	13,750 Sq. Ft.
5	Henry & Julia Goodrath	13,750 Sq. Ft.
6	Darwin & Ida Simmons	15,800 Sq. Ft.
7	J.K. & Velma Wright	7,500 Sq. Ft.
8	Idalia Hall	27,194 Sq. Ft.
9	Angelina Macias	16,250 Sq. Ft.
10	John & Doris Pierpoint	13,750 Sq. Ft.
11	Art. Paris	13,750 Sq. Ft.
12	Elpidio & Frances Ortega	15,606 Sq. Ft.

VIII SBD-31, 43-SBD
 RIGHT OF WAY MAP
 SCALE
 0 100 FEET 200 300
 PARCEL NUMBERS
 SHEET 1 OF 84



February 16, 1954
 84
 289